

# Wohnungs-Grundrisse Holzminden

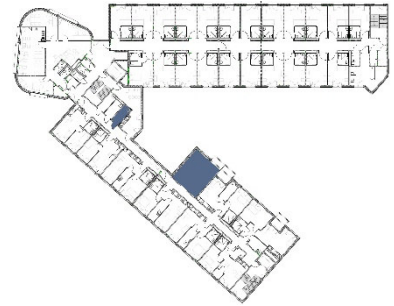
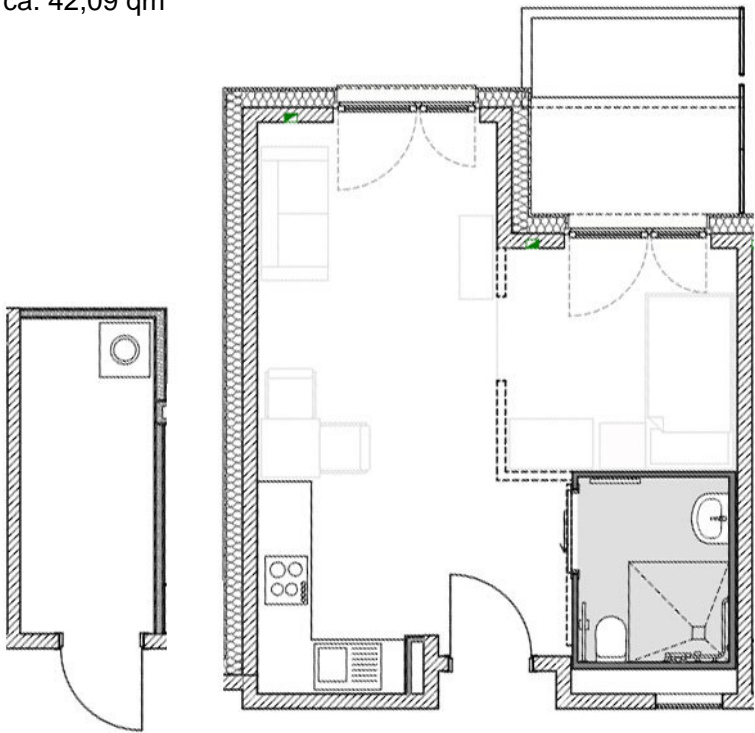
**1.OG Wohnung 1.05 - 1.13**

**2.OG Wohnung 2.05 - 2.13**



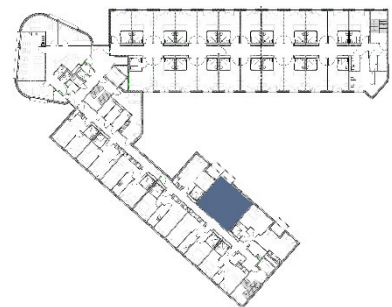
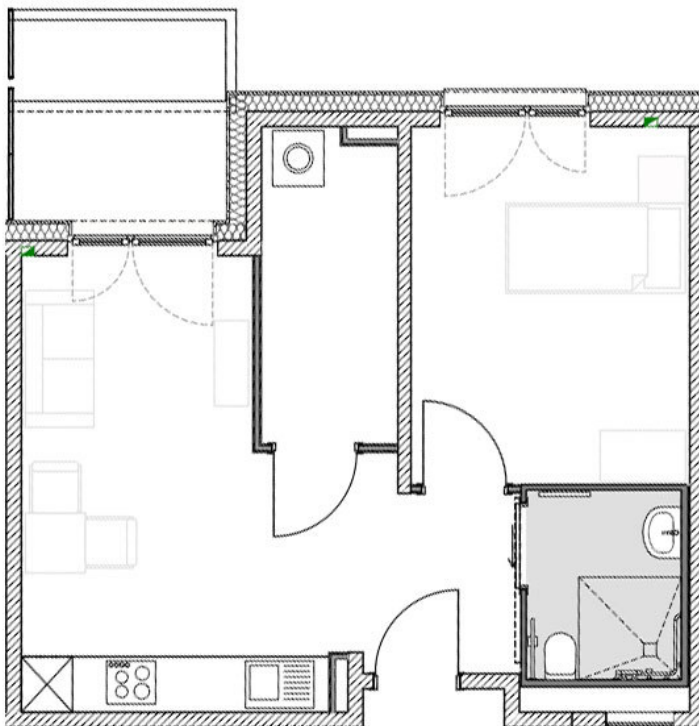
**Wohnung 1.OG – 1.05**

ca. 42,09 qm



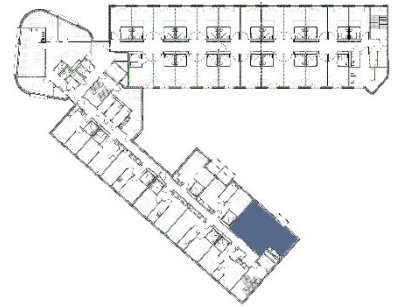
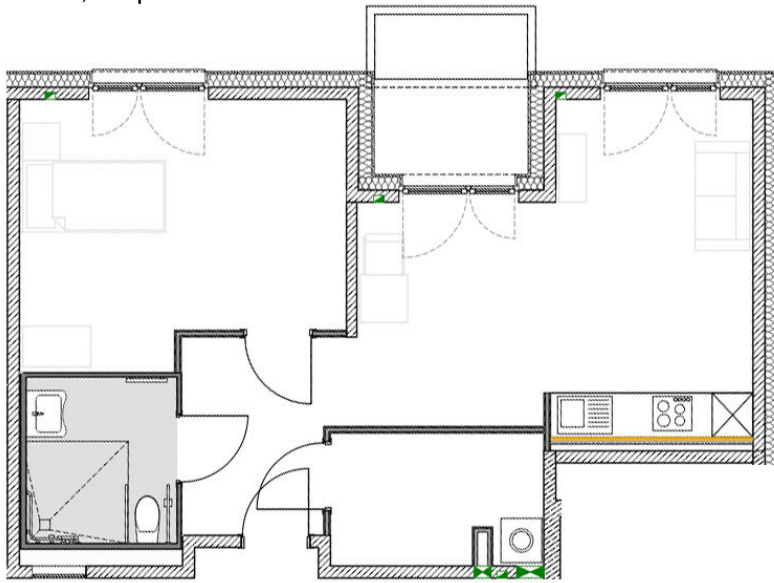
**Wohnung 1.OG – 1.06**

ca. 48,88 qm



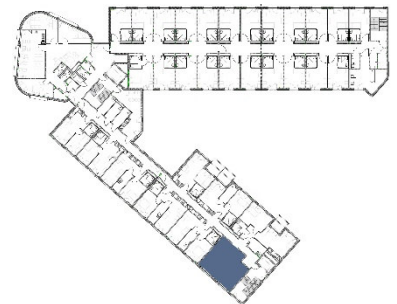
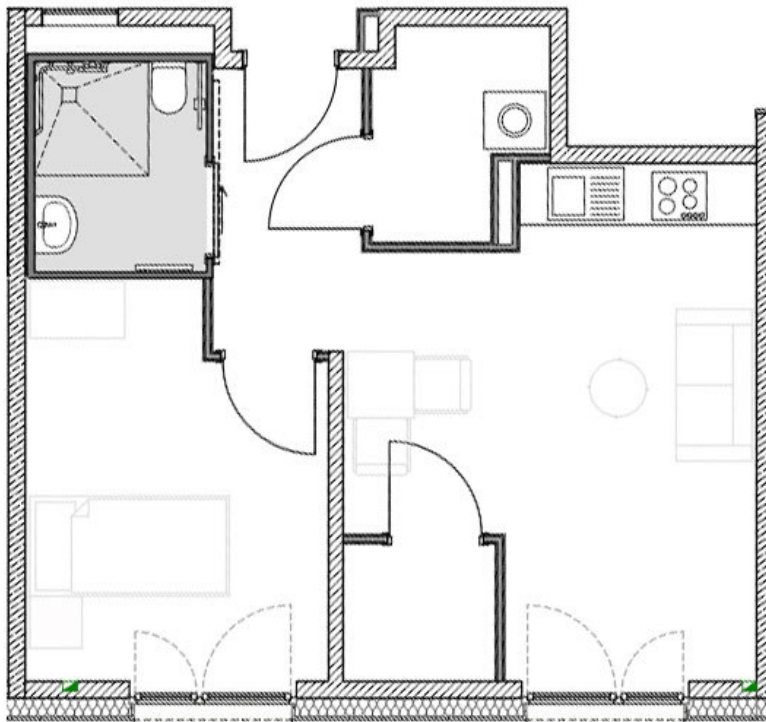
**Wohnung 1.OG – 1.07**

ca. 62,76 qm



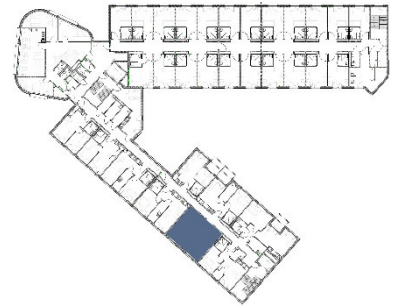
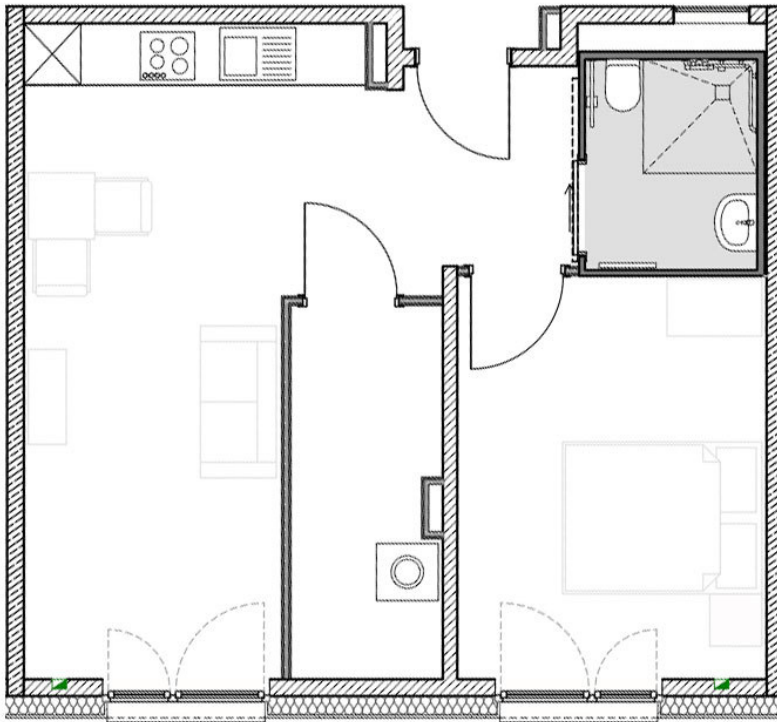
**Wohnung 1.OG – 1.08**

ca. 46,33 qm



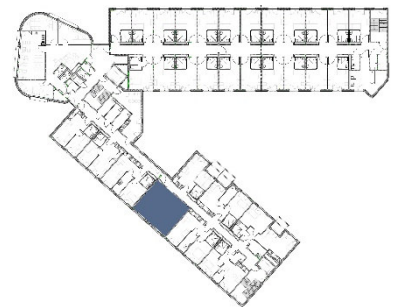
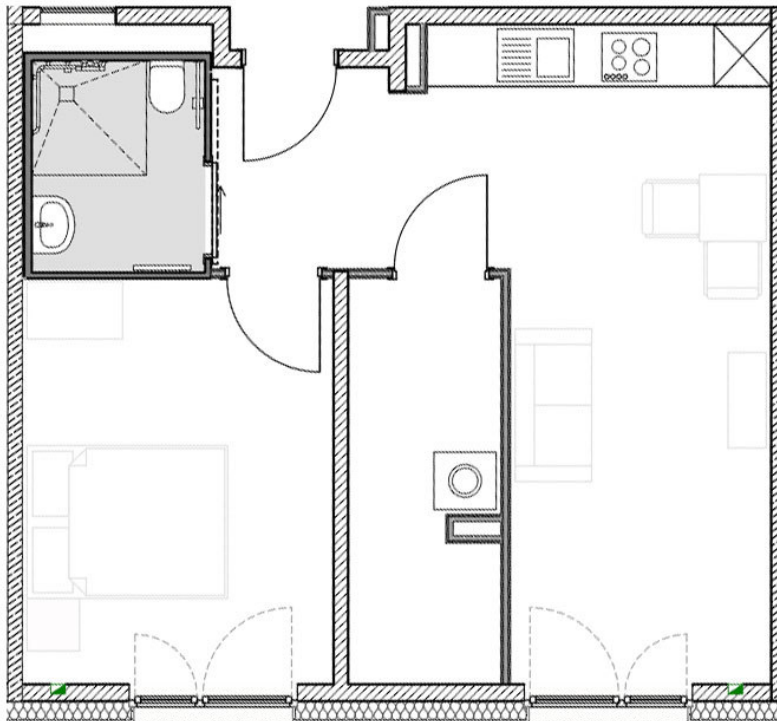
**Wohnung 1.OG – 1.09**

ca. 50,23 qm



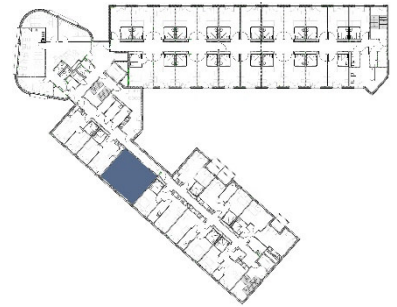
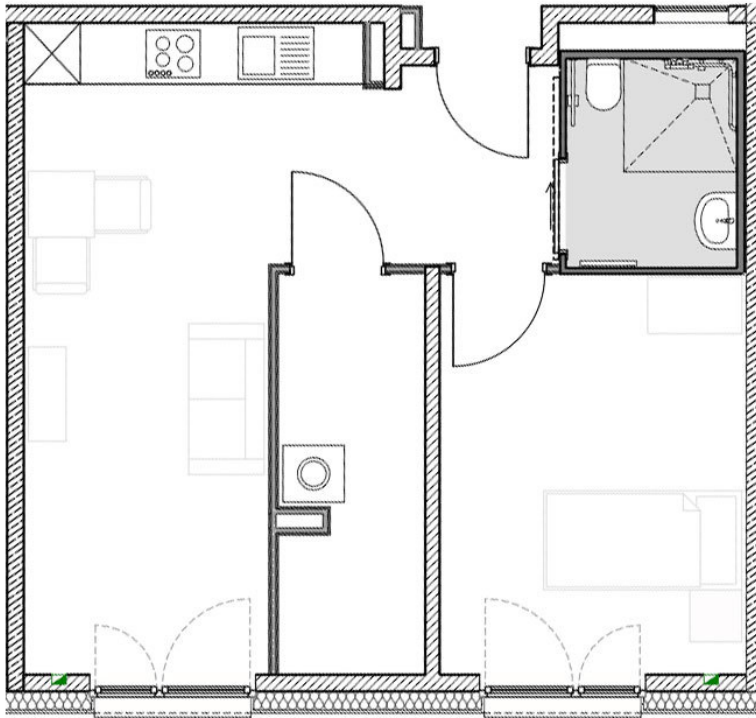
**Wohnung 1.OG – 1.10**

ca. 50,35 qm



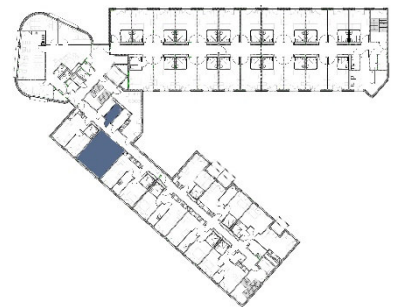
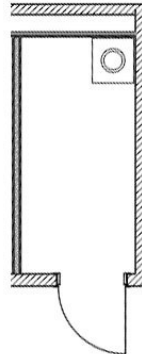
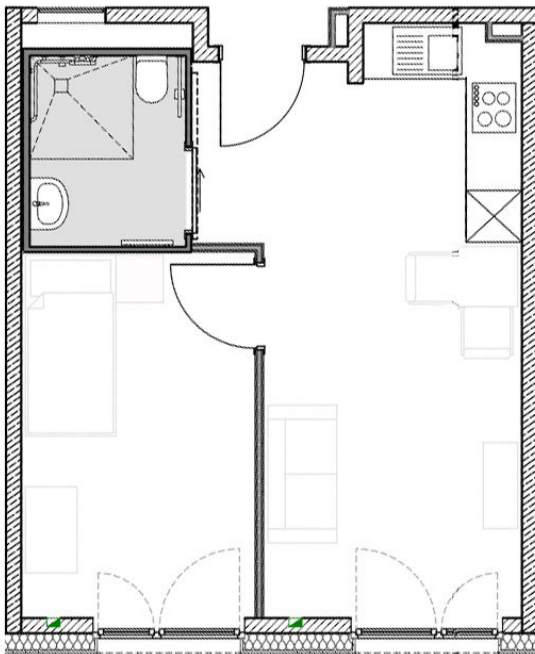
**Wohnung 1.OG – 1.11**

ca. 49,16 qm



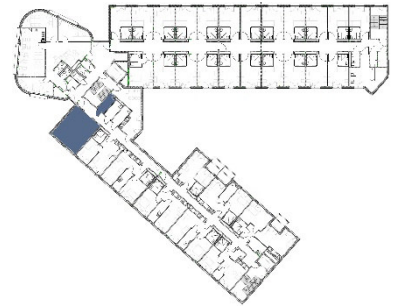
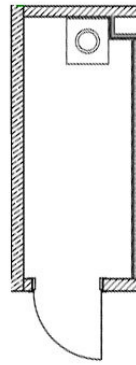
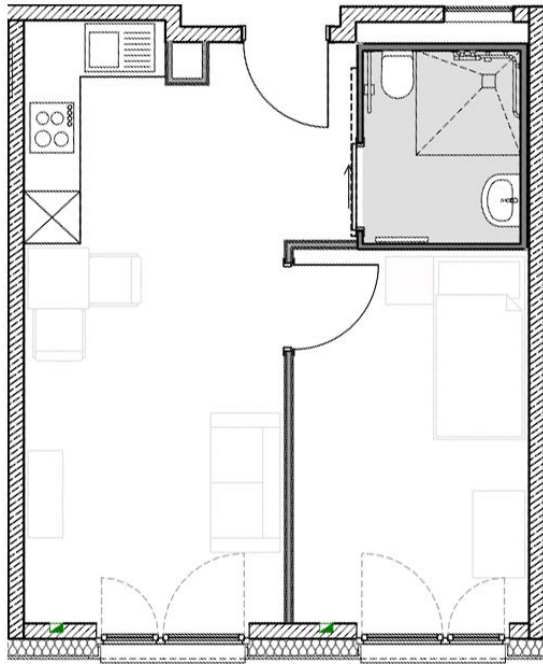
**Wohnung 1.OG – 1.12**

ca. 43,08 qm



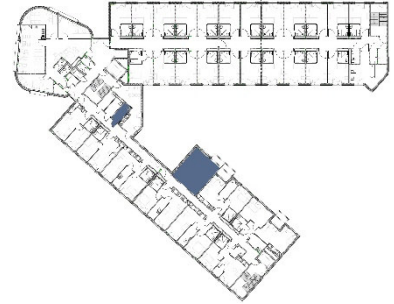
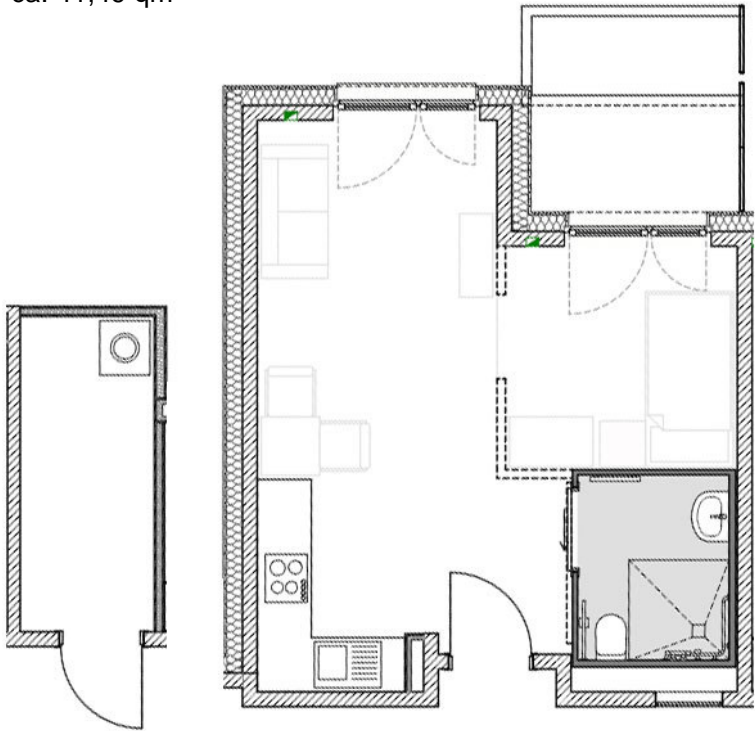
**Wohnung 1.OG – 1.13**

ca. 43,52 qm



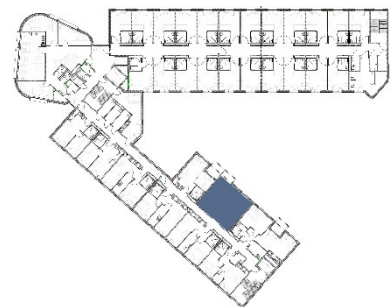
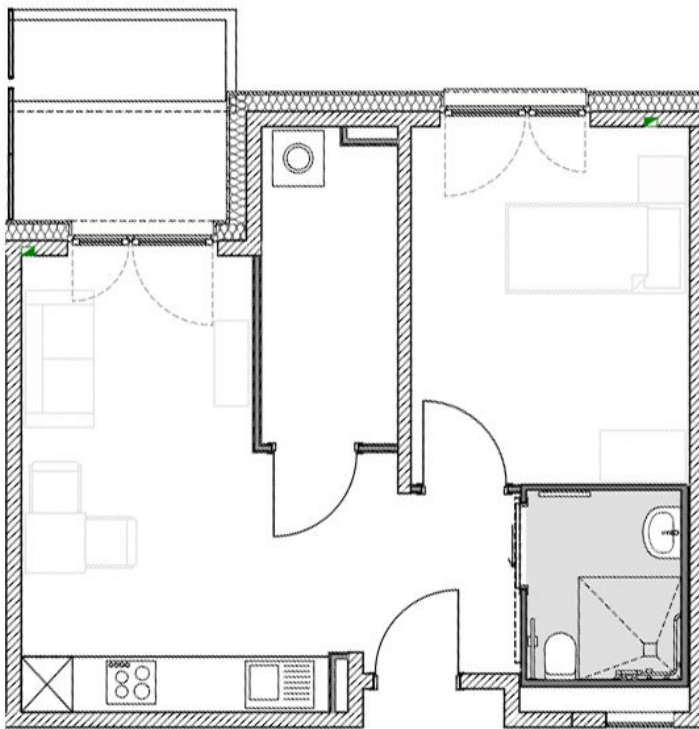
**Wohnung 2.OG – 2.05**

ca. 41,49 qm



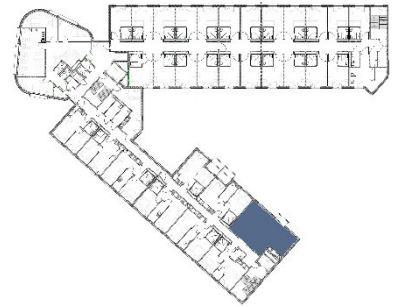
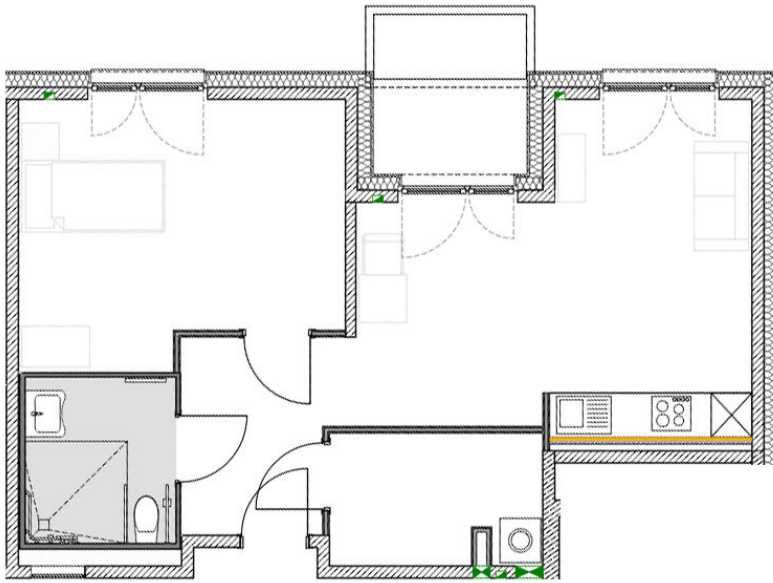
**Wohnung 2.OG – 2.06**

ca. 48,91 qm



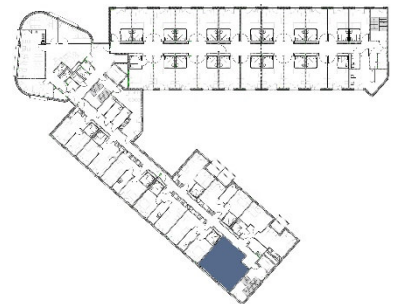
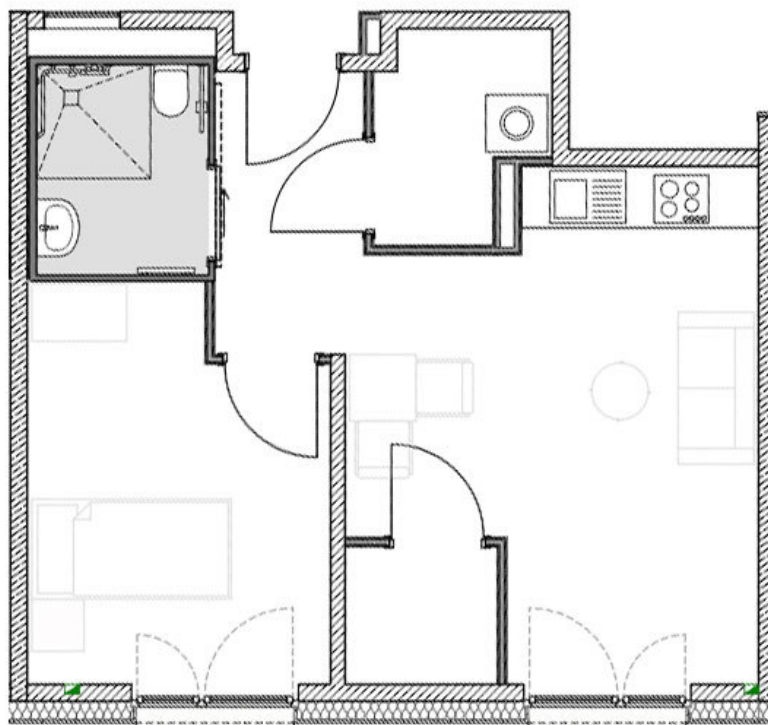
**Wohnung 2.OG – 2.07**

ca. 62,69 qm



**Wohnung 2.OG – 2.08**

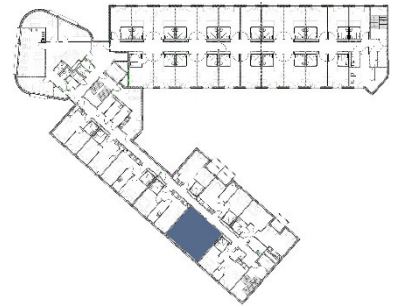
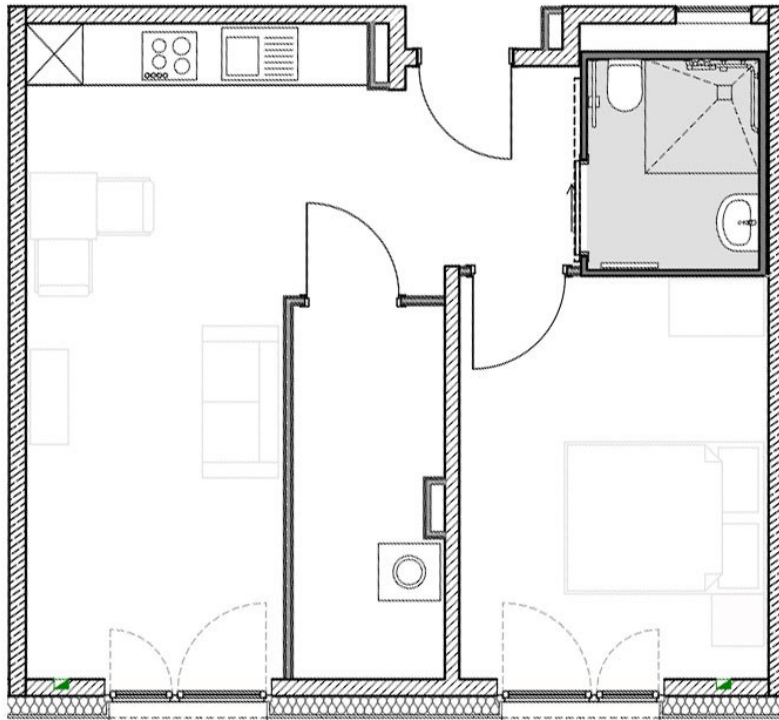
ca. 46,33 qm





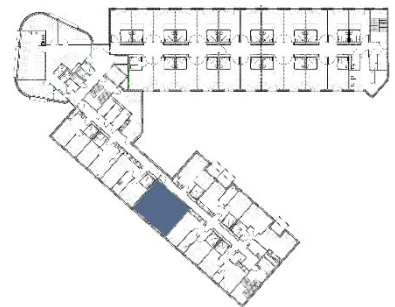
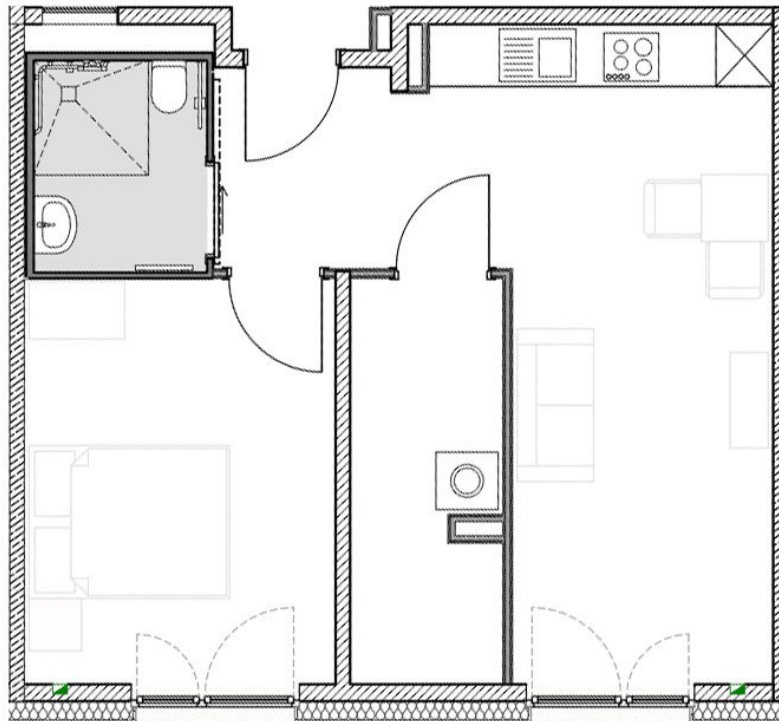
**Wohnung 2.OG – 2.09**

ca. 50,22 qm



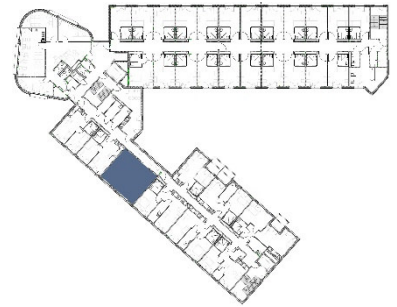
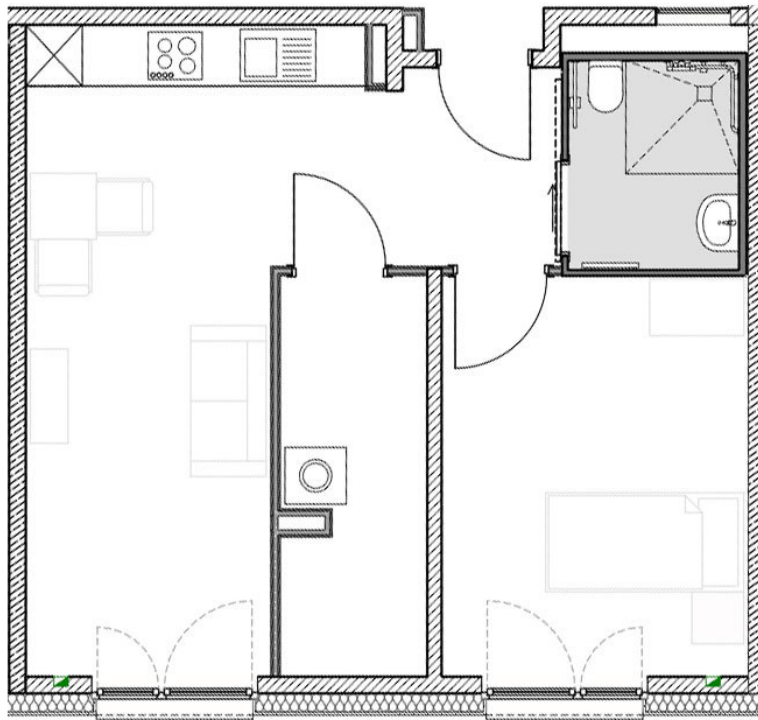
**Wohnung 2.OG – 2.10**

ca. 50,40 qm



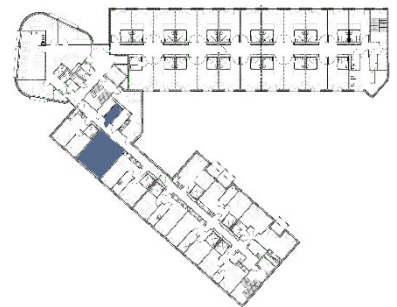
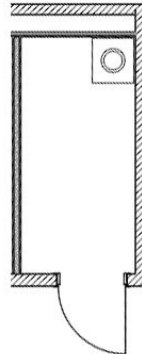
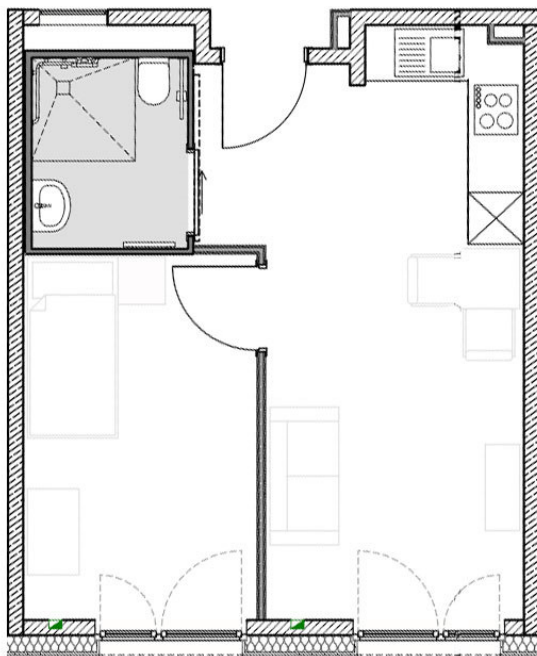
**Wohnung 2.OG – 2.11**

ca.49,12 qm



**Wohnung 2.OG – 2.12**

ca. 43,08 qm



**Wohnung 2.OG – 2.13**

ca. 43,52 qm

